



Bobcat®

One Tough Animal.

DIESEL FORKLIFTS

5-Series, Pneumatic, 6.0 to 9.0 ton capacity D60S-5 / D70S-5 / D80S-5 / D90S-5



ONE TOUGH ANIMAL

► OUR MISSION

We empower operators to accomplish more, while working in the toughest conditions and tightest situations. When our customers have the will, we provide the way.

INTRODUCTION

► BOBCAT'S HISTORY

In 1958, Melroe Manufacturing Company introduced a compact front-end loader that evolved quickly into the M400, the world's first true skid steer loader. The company soon adopted what became the world-famous 'Bobcat' brand – and its success paved the way for the global compact equipment industry we know today.

► YEARS OF EXPERIENCE

In 2021, Bobcat expanded its portfolio by acquiring Doosan Industrial Vehicle. This specialist in material handling equipment constructed its first forklift in 1968 and went on to establish a global presence with 400 dealers in 93 countries.



► BOBCAT TODAY

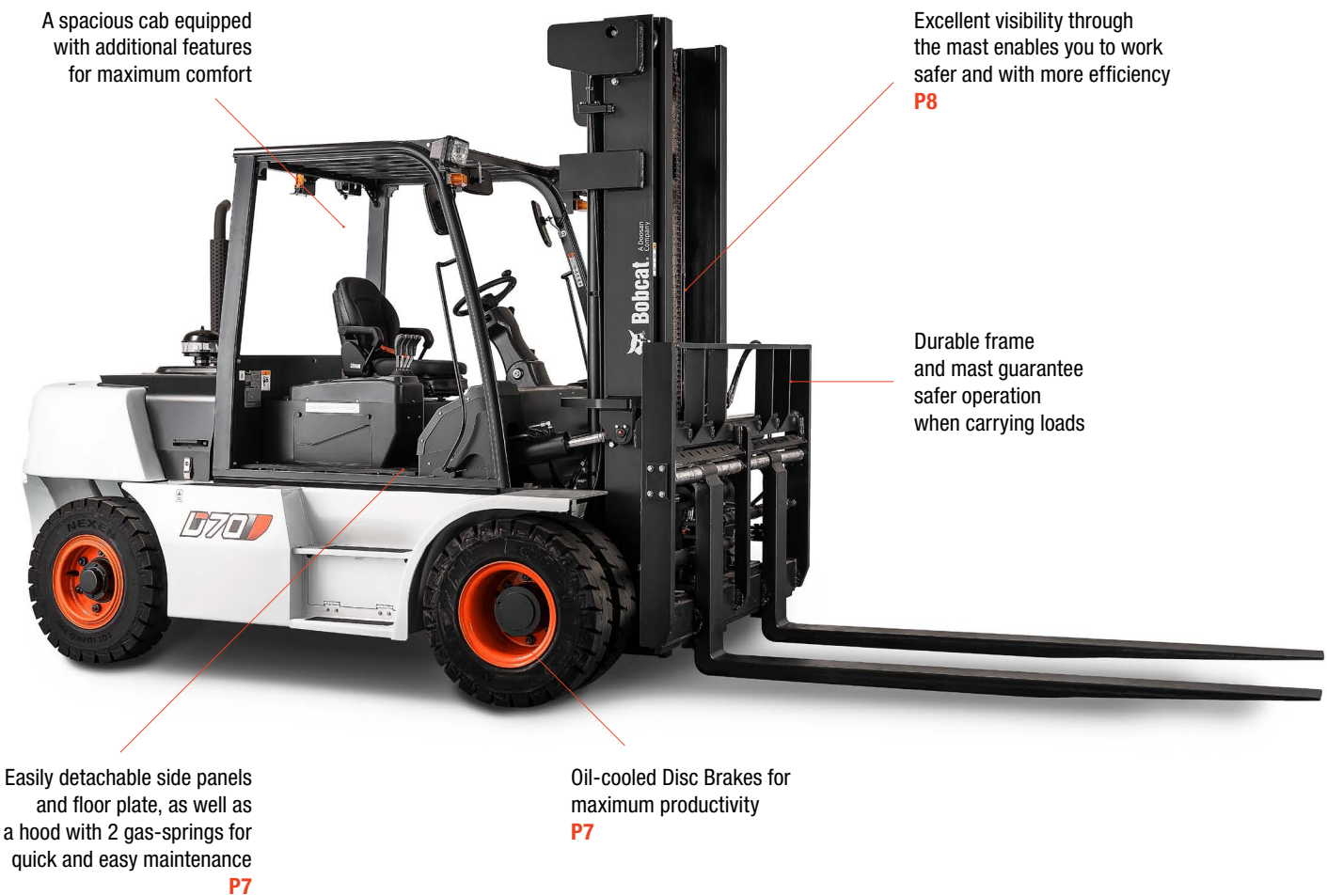
Bobcat is expanding its portfolio with the addition of forklifts and reach trucks for the material handling industry. Offering a comprehensive line-up that will meet all your intralogistics needs. Bobcat forklifts and reach trucks are produced in our factory in Korea, while our premium quality warehouse equipment is made in Germany.



TOUGH, AGILE & SAFE

► DESIGNED FOR PRODUCTIVITY

With high-performance engines, fluid, intuitive controls, superior operator comfort, and a host of safety features, Bobcat D70S-5 Series are ready to boost the productivity of your business while keeping spending in check thanks to a low cost of ownership.



► POWERFUL AND EFFICIENT

Get more done every day thanks to high-performance engines with 2-speed or 3-speed transmission and up to 73.5kW of power to save operators time in every task. **P 6-7**



► COMFORTABLE ALL SHIFT LONG

Enjoy the comfort of a spacious cab with plenty of legroom, deluxe suspended seat, integrated instrument panel, tiltable steering column, and many more features. **P 8-9**



► SAFETY FIRST

Protect your investment, workforce, and handled goods. Excellent all-around visibility, reliable brakes, and a host of other safety features come as standard. **P 10-11**



► BUILT TOUGH

The superior hydrostatic steering system is designed for high shock absorption, while the rugged frame, fully floating drive axle, and oil-cooled brakes ensure years of productivity, all day, every day. **P 12-13**



OUTSTANDING PRODUCTIVITY



SEAMLESS SHIFTING
Experience seamless transitions between tasks or adjustments to different conditions with our two-speed autoshift transmission, allowing you to achieve the perfect balance between precision and movement



BUILT TOUGH
The hydrostatic steering system is designed for high shock absorption, while the rugged frame, fully floating drive axle, and oil-cooled brakes ensure years of productivity, all day, every day.

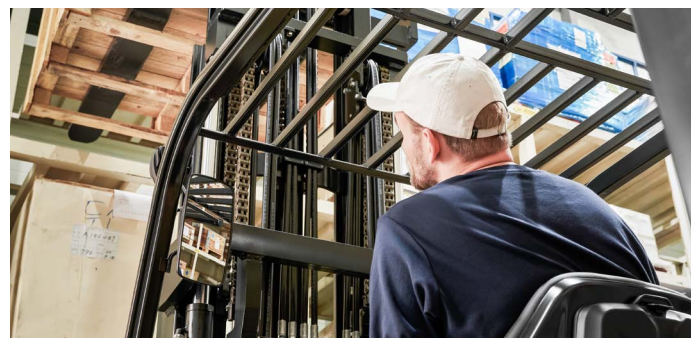


HYDRAULIC CONTROL
Experience the convenience of hydraulic control for lifting and tilting, providing efficient and precise handling for all your material transport needs.



OIL-COOLED DISC BRAKES
Enjoy oil-cooled disc brakes for better braking and faster cycles, giving you the confidence to navigate and stop quickly. This enhancement significantly speeds up task completion and boosts overall productivity.

COMFORT & CONTROLS



► IMPROVED VISIBILITY

Benefit from improved operator visibility in all working positions, thanks to a wider mast window, repositioned hydraulic hoses, and a flat bar-style overhead guard.



► SUSPENSION SEAT

The suspension seat is designed for operator comfort, offering a larger seat back angle, extended seat travel length, and operator's weight resistance on the front side, allowing for multiple adjustments to create the most comfortable seating experience.



► SPACIOUS OPERATOR COMPARTMENT

The cabin's ample legroom, adjustable steering column, and ergonomic operator pedals ensure ease of entry and exit for the operator.



► INTEGRATED INSTRUMENT PANEL

The centralized and user-friendly instrument panel enhances operator efficiency by providing easy access to critical information such as fuel gauge, engine hour meter, engine oil pressure, coolant levels, and more, ensuring operators are constantly informed about the vehicle's performance.

► CONVENIENCE TRAY



This truck comes equipped with a handy convenience tray that stores refreshments, paperwork, small tools, and more, for more efficiency on the job.

► EASY ACCESS



This forklift features a low step height, facilitating easy and safe operator entry and exit, complemented by an easy entry grab bar and an anti-slip step plate.

► OPTIMUM PEDAL SYSTEM



The Optimum Pedal System (OPS) – equipped with a new electronic accelerator – is designed to reduce operator fatigue and deliver the best driving experience for the operator.



SAFETY IN EVERY MOVE

▶ **ADVANCED PROTECTION FOR YOU AND YOUR OPERATION**

Bobcat forklifts have safety embedded in their DNA. Packed with tons of features that protect your health and your investment, these machines give you peace of mind in every task, every day.

▶ **OPERATOR SENSING SYSTEM**

Our Operator Sensing System (OSS) ensures that whenever the operator leaves the seat, the truck's travel and mast lifting functions automatically stop. This intelligent system prevents unintended forklift movements when the operator is not seated, enhancing safety in the workplace.



▶ **MAST LOWERING INTERLOCK & TILT LOCK**

The Mast Lowering Interlock & Tilt Lock system prevents unintentional lowering and tilting of the mast, safeguarding both the truck and the load while maintaining a secure work environment.



▶ **BACKUP ALARM**

The backup alarm emits a warning signal when the operator is driving in reverse, alerting those nearby and further ensuring safety in the workplace.



▶ **WEIGHT SCALE**

With the help of integrated weigh scale you can prevent overloading your truck so you'll always be safe and sound.



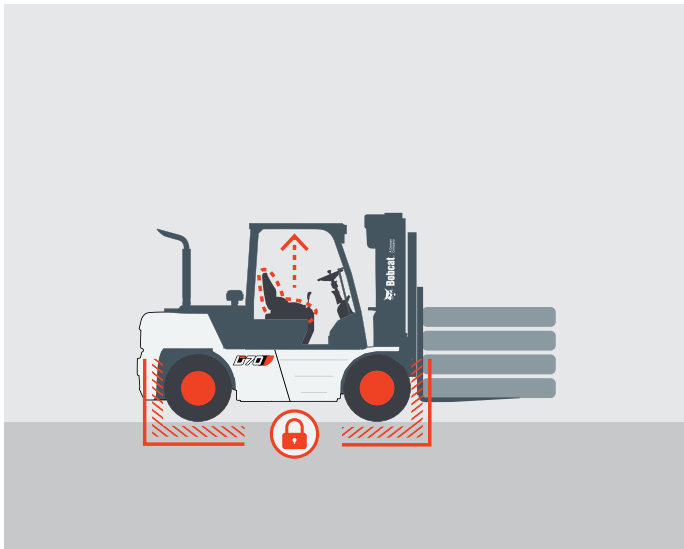
▶ **SEAT BELT INDICATOR**

Enhance safety in your forklift operations with the seat belt indicator, to protect both your team and your business.



▶ **PARKING BRAKE ALERT**

Prioritize operator safety and safeguard against accidental movement with our parking brake warning system.



▶ **BRIGHTER AND SAFER**

Experience a brighter, safer, and more efficient workday with our front lights, combination lamps and additional rear light.



▶ **REAR VIEW MIRROR**

The rear view mirror provides more visibility, preventing accidents while reversing and avoiding collisions with objects and pedestrians, ensuring a safer work environment.



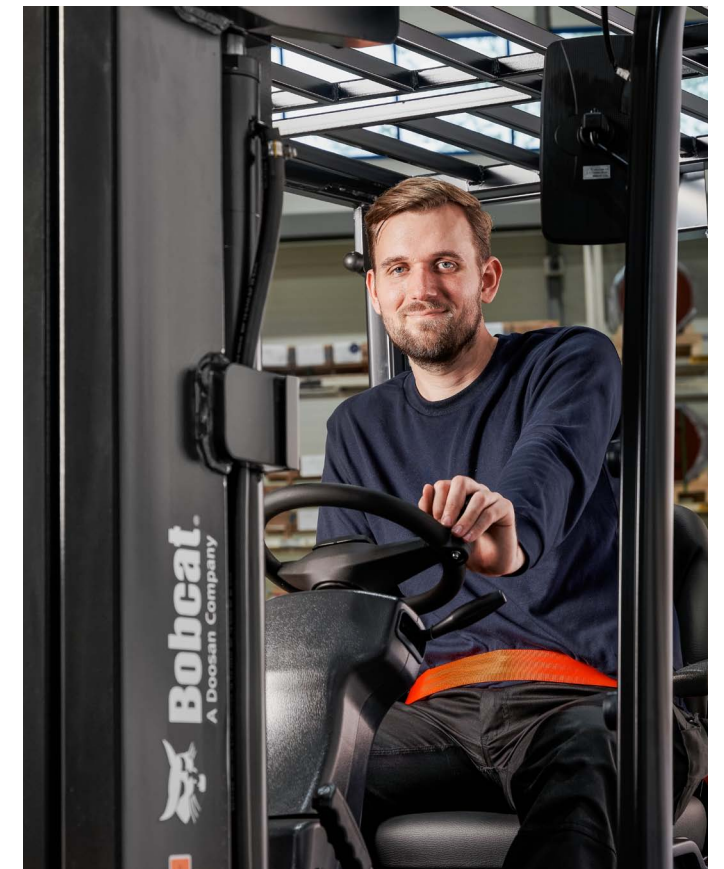
BUILT TO LAST

► A HERITAGE OF RELIABILITY

Bobcat forklifts embody the combination of robustness and reliability – they are machines that will allow you to focus on your business without worrying about your fleet.



**THERE'S NO TIME
FOR DOWNTIME.
STAND UP TO EVERY TASK
THAT COMES YOUR WAY.
DAY AFTER DAY.**



► EXTENSIVE DEALER NETWORK

You will receive the best after-sales service from your authorized local or national factory-trained dealer, backed by Bobcat's own customer service center. And Bobcat provides 100% parts inventory to insure any downtime is minimized. When you own a Bobcat forklift, our high quality, responsive customer support team comes with it.

► BOBCAT GENUINE PARTS

Quality components delivered to our dealers guarantee that all of our equipment is built to last, withstand the toughest conditions and provide reliable performance.

MAIN SPECIFICATIONS

MAIN SPECIFICATIONS					
		D60S-5	D70S-5	D80S-5	D90S-5
Load capacity	kg	6 000	7 000	8 000	9 000
Load center	mm	600	600	600	600
Wheel base	mm	2 250	2 250	2 500	2 500
Height, mast lowered	mm	2 500	2 500	2 835	2 835
Free lift	mm	205	205	215	215
Lift height	mm	6 000	6 000	5 600	5 600
Height, mast extended	mm	4 340	4 340	4 375	4 375
Height, overhead guard	mm	2 455	2 455	2 648	2 648
Seat height	mm	1 333	1 333	1 526	1 526
Length to fork face	mm	3 568	3 647	4 014	4 040
Overall width	mm	2 108	2 108	2 230	2 230
Turning radius	mm	3 331	3 380	3 650	3 680

Specification values quoted in this specification sheet have been rounded. Performance may vary depending on operating conditions. Products and specifications are subject to improvement and change without prior notice.



STANDARD EQUIPMENT & OPTIONS

STANDARD EQUIPMENT & OPTIONS	
SAFETY	
Operator Sensing System	✓
Excellent visibility	✓
Parking brake	✓
Overhead guard	✓
Two front LED lights	✓
Load backrest	•
Front lights with combination lamps	•
Rear safety light	•
Emergency lamp and switch	•
Back up alarm	•
ERGONOMICS	
Tilt steering column	✓
Hydraulic levers control	✓
Spacious operator compartment	✓
Optimum Pedal System (OPS)	✓
Integrated instrument panel	✓
Convenience tray	✓
Radio and MP3 for full cabin	✓
Modular cabin type A,B,C	•
Full cabin	•
Steering wheel knob	•
Rear grab bar	•
Rear view mirror	•
Heater & air conditioner	•
Tool kit	•
Suspension seat	•
Seat belt interlock	•

STANDARD EQUIPMENT & OPTIONS	
PRODUCTIVITY	
Power steering	✓
High air inlet from overhead guard	✓
Hydrostatic Steering System	✓
Power Reversal Transmission	✓
Auto tilt levelling	•
Mono pedal	•
Defroster fan for full cabin	•
Autoshift controller	•
RELIABILITY	
Oil-cooled Disc Brakes (ODB)	✓
Vertical exhaust muffler	✓
Air cleaner	✓
Heat shield for battery	✓
Full floating drive axle	✓
Rain cap	✓
Pre cleaner	•
Engine shutdown for power protection	•
SERVICEABILITY	
Dual element air cleaner and rain cap	✓
Centralized fuse and relay box	✓
Easy open side cover and floor plate	✓
Fuel cap with key	•

*This list is based on factory data. Standard or optional can vary for specific countries.

• = option
✓ = standard
– = not available

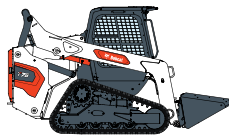
YOUR TRUSTED BUSINESS PARTNER

Your machine builds your business and reputation. Everything we put into Bobcat equipment is designed to make this possible. Strength, versatility, or agility, it's built around you.

340 MACHINES / 150 ATTACHMENT FAMILIES / 1 TOUGH ANIMAL



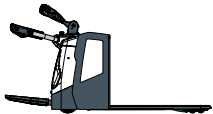
**SKID-STEER
LOADERS**



**COMPACT TRACK
LOADERS**



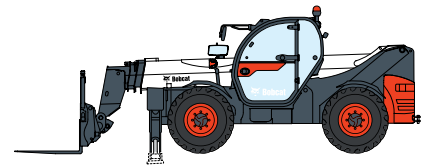
**BACKHOE
LOADERS**



**WAREHOUSE
EQUIPMENT**



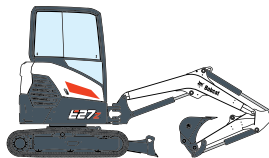
FORKLIFTS



TELEHANDLERS



**LIGHT COMPACTION
EQUIPMENT**



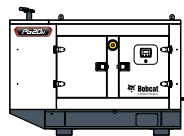
**COMPACT
EXCAVATORS**



**SMALL ARTICULATED
LOADERS**



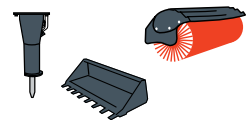
**MINI TRACK
LOADER**



**PORTABLE
GENERATORS**



AIR COMPRESSORS



ATTACHMENTS

DOOSAN

Bobcat is a Doosan Company. Doosan is a global leader in construction equipment, power & water solutions, engines, and engineering proudly serving customers and communities for more than a century. | Bobcat and the Bobcat logo are registered trademarks of Bobcat Company in the United States and various other countries. ©2024 Bobcat Company. All Rights Reserved.

www.bobcat.com

Feb 2024



Bobcat®

Doosan Bobcat Korea Co., Ltd.