
TECHNICAL DATA SHEET

MT-X 733 MINING

Manitou Telescopic



MT-X 733 MINING

Lifting	
Max. capacity	3300 kg
Max. lifting height	6,90 m
Max. outreach	3,90 m
Break-out force with bucket	7400 daN
Boom movements speeds (unladen)	
Lifting / Lowering	7,2 / 5,5 secs
Extension / Retraction	6,5 / 5,4 secs
Crowd / Dump	2,9 / 2,8 secs
Engine	
Type	PERKINS 1104D-44 T
Cubic capacity	4400 cm ³
Power	95 HP / 70 kW
Max. torque	392 Nm - 1400 rpm
Injection	direct
Cooling	water
Hydraulics	
Pump	"gear type with flow divider 104 l/min - 250 bar"
Electrical	
Battery	12 V - 110 Ah - 750 A EN
Alternator	12 V - 85 A - Denso Ai115
Starter	12 V - 3.2 kW AZE
Transmission	
Gear box	TURNER
Type	mechanical with Torque Converter
Forward/Reverse Selector	electro-hydraulic
Torque Converter	SACHS
Number of gears	(forward/reverse) 4/4
Front & Rear axles / Differential	"DANA / Limited slip front rigid - rear oscillating"
Drive Wheels	Permanent 4 wheel drive
Tyres	400/80-24
optional	NOKIAN 12.00-20 Armor Gard Mine
Max. travel speed	27 kph
(may vary according to applicable regulations)	
Steering mode	4 wheel steer - 3 steering modes
Uphill/downhill safe operating grade	up to 1:4 (25%)
Laden drawbar pull	9000 daN
Towable mass on trailer	
with no braking	1500 kg
with independent braking	3000 kg
with assisted braking (hydraulic or pneumatic)	6000 kg

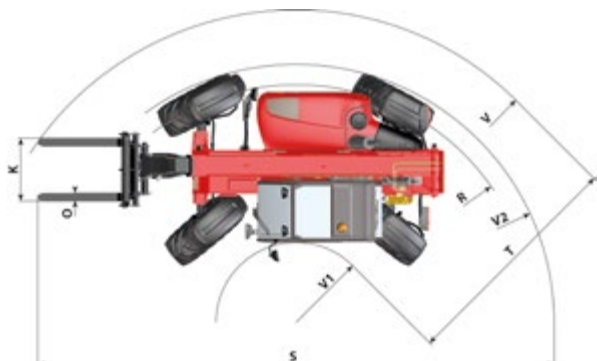
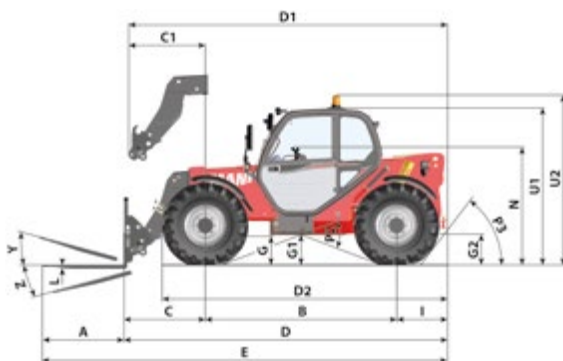
MT-X 733 MINING

Braking & Steering	
Type	mining Fail-Safe Braking System
Service brake	Hydraulic power brake
Type	dual acting master cylinder with independent lines to multi-disk brakes in oil bath on front & rear axles.
Control	foot-operated for front & rear axles
Parking/Emergency brake	
Type	spring applied hydraulic release (SAHR) on front & rear axles.
Control	electro-hydraulic. Cabin manual hydraulic lever. automatic application on engine shut-down.
Slope holding performance	25%
Operator test & warning	"daily service & park brake test switch procedure warning: Low brake pressure, residual service brake pressure, loss of cabin driver presence."
Standards/Guidelines	based on ISO 3450:2011
Emergency steering	based on ISO 5010:1992
Control systems & Warning	
Stability	longitudinal stability limiter with movement cut out
Critical functions monitoring & engine shut down	"Manitou Guardian Angel mining system - level 1 engine-steering-hydraulic-speed-tip over"
Pre-Start Warning Horn	5s
General protections - Fire prevention & control	
Cabin	ROPS ISO:3471 - FOPS ISO: 3449 Level 1 and 2
Body	boom cylinder rod, lights & cabin guards - metallic self cleaning engine pre-filter
Electricals	
Fuse board & main harness	Ultimate Fuse Board protection system
Wiring and other electrical components	"Ultimate Wiring protection system (standard in Australia MDG15, option other country)"
<i>"Exhaust in accordance with EPA CTM 022 1995, EPA CTM 030 1997, UNI EN 126719:2013, UNI EN 13284-1:2003, including variable engine rpm cycles to simulate real working environment."</i>	"MANITOU Safe Exhaust System - purifier & diluter reduce exposure to toxic gas: -85% (volume) -50% (mass) -60% (temperature)"
Fire prevention & control	
Extinguisher(s)	2x 9Kg Powder
Prevention	"Engine Compartment Fire Prevention System (standard in Australia MDG15, option other country)"

MT-X 733 MINING

Ergonomics, access, visibility	
LED Lights & Cameras	360° Visibility Safety System
Work lights	LED 3200 lux (2x front 2x rear 2x boom)
Cameras	blind spots on right hand side and rear
Other	fwd/rev directionnal lights, rear light on when rev
Markings, Signs, Labelling	warning & danger, controls & pre-op, refelective hi-visibility, access & maintenance point
Isolation points & miscellaneous	
Emergency stops	cabin x1 - External x2
Isolation	"dual pole battery + starter isolators, fuel isolation valve, jump start receptacle, all inside engine bay"
Miscellaneous	"radiator safety cap belts & pulleys safety guards wheel chocks x2 boom cylinder lock loose wheel nut indicators"
Capacities	
Hydraulic oil	128 l
Fuel	120 l
Noise and vibration	
Noise at driving position (LpA)	78 dB
Environmental noise (LwA)	104 dB
Vibration to whole hand/arm	<2.5 m/s ²
Vibration on driver's body	1.015 m/s ²
Weight	6620 kg

A	(mm)	1200
B	(mm)	2810
C	(mm)	1193
C1	(mm)	1128
D	(mm)	4761
D1	(mm)	4696
D2	(mm)	4193
E	(mm)	5961
F	(mm)	1846
F1	(mm)	1846
G	(mm)	455
G1	(mm)	440
G2	(mm)	440
I	(mm)	758
J	(mm)	865
K	(mm)	1040
L	(mm)	45
N	(mm)	1690
O	(mm)	125
P2	(°)	47,5
P3	(°)	53
R	(mm)	3598
S	(mm)	6398
T	(mm)	3490
U1	(mm)	2300
U2	(mm)	2550
V	(mm)	4800
V1	(mm)	1310
V2	(mm)	3800
W	(mm)	2260
Y	(°)	11,9
Z	(°)	113,8

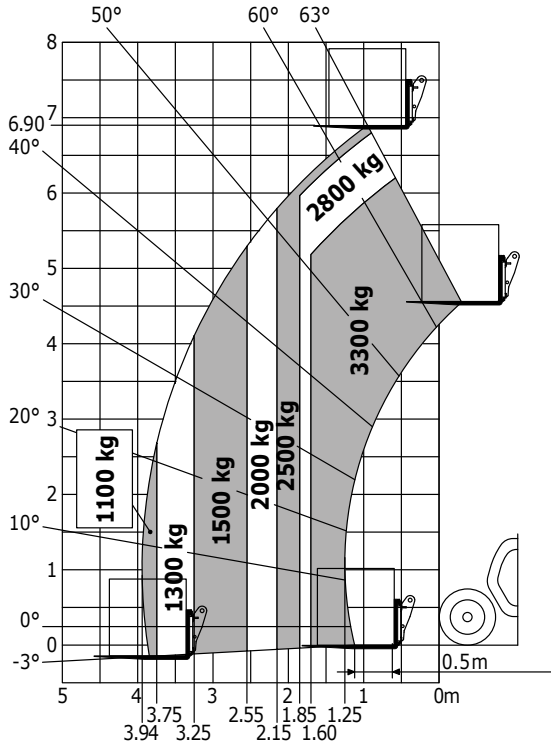


MT-X 733 MINING

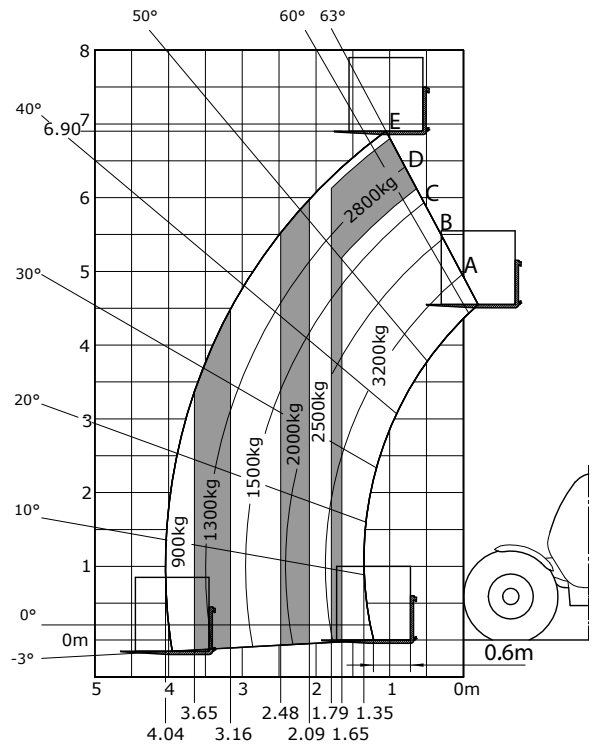
OPTIONAL EQUIPMENT
Fail safe braking and steering
Emergency Steering
Control systems & warnings
Stability Control: Rated Capacity Limiter
External overload light tower indicator for rated capacity limiter (Green, Yellow, Red)
Guardian angel mining system - Level 2
Bi-axial spirit level indicator
Tyre pressure & temperature monitoring
General protection
Hydraulic Hose Sleeve Burst Protection
Cabin Guard: roof
Belly guard (plate)
Guard: A/C condensor
Elevated breathers
Side bumper - Protector bar
Rear bumper - Protector bar
Steel mudguards
Ultimate wiring protection system
Nokian 12.00-20 Armor Gard Mine
Fire prevention & control
Engine Compartment Fire Prevention System - Fuel lines fire resistant steel braided
Fire resistant Fuel filter
Turbo Sock
Fire Resistant Engine Bonnet
Exhaust line / Muffler Insulation Blanket
Fire suppression system - Manual & automatic activation
Cabin extinguisher
Ergonomics access visibility
Seat Tractor-Back shape + Autoretracting Seat Belt 75mm wide
Air conditioning
Maintenance
Battery, Starter isolation points + Jump Start Receptacle In External Weatherproof Enclosure
Fast fill dry break point - Fuel
Fast fill dry break point - Hydraulic oil
Central Greasing System
Auxiliary hydraulic-Electric quick multi-coupling plate system
Easy Connect System - Attachment hydraulic hoses
Hydraulic locking of attachment on T.S.
Predisposition
Tyre handler predisposition

MT-X 733 MINING

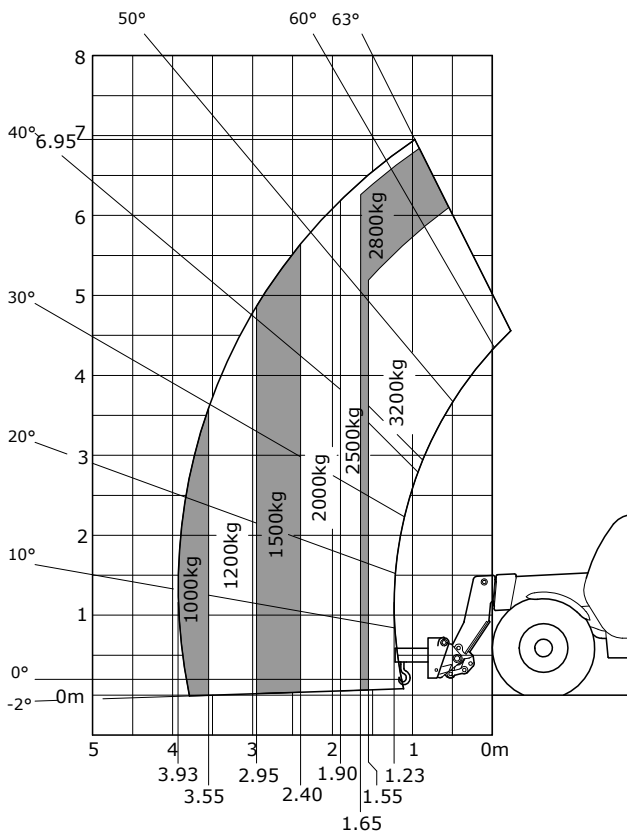
**Machine on tyres with forks
(Norm EN1459-B)**



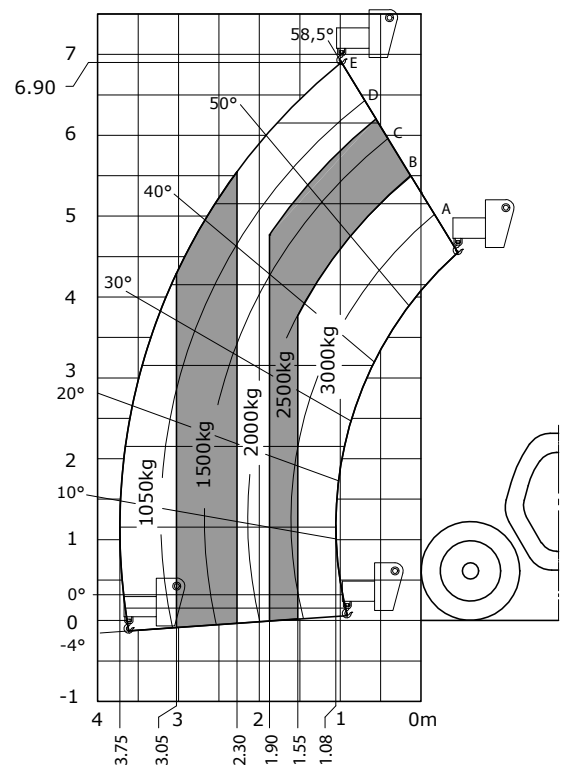
**Machine on tyres with forks
(Norm AS1418.19)**



**Machine on tyres with PC50
(Norm EN1459-B)**

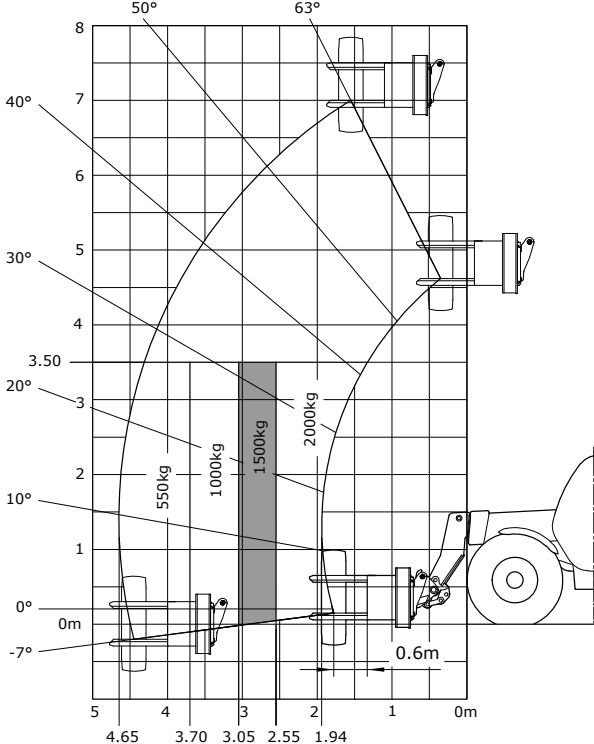


**Machine on tyres with PC50
(Norm AS1418.19)**



MT-X 733 MINING

Machine on tyres with TH33 (Norm EN1459-B)





 **MANITOU**
HANDLING YOUR WORLD

Head office

B.P. 10249 - 430 rue de l'Aubinière - 44158 Ancenis Cedex - France

Tel.: 00 33 (0)2 40 09 10 11 - Fax: 00 33 (0)2 40 09 10 97

mining@manitou-group.com

This brochure describes versions and configuration options for Manitou products which may be fitted with different equipment. The equipment described in this brochure may be standard, optional or not available depending on version. Manitou reserves the right to change the specifications shown and described at any time and without prior warning. The manufacturer is not liable for the specifications given. For more information, contact your Manitou dealer. Non-contractual document. Product descriptions may differ from actual products. List of specifications is not comprehensive. The logos and visual identity of the company are the property of Manitou and may not be used without authorisation. All rights reserved. The photos and diagrams contained in this brochure are provided for information only.
MANITOU BF SA - Limited company with board of directors - Share capital: 39,547,824 euros - 857 802 508 RCS Nantes